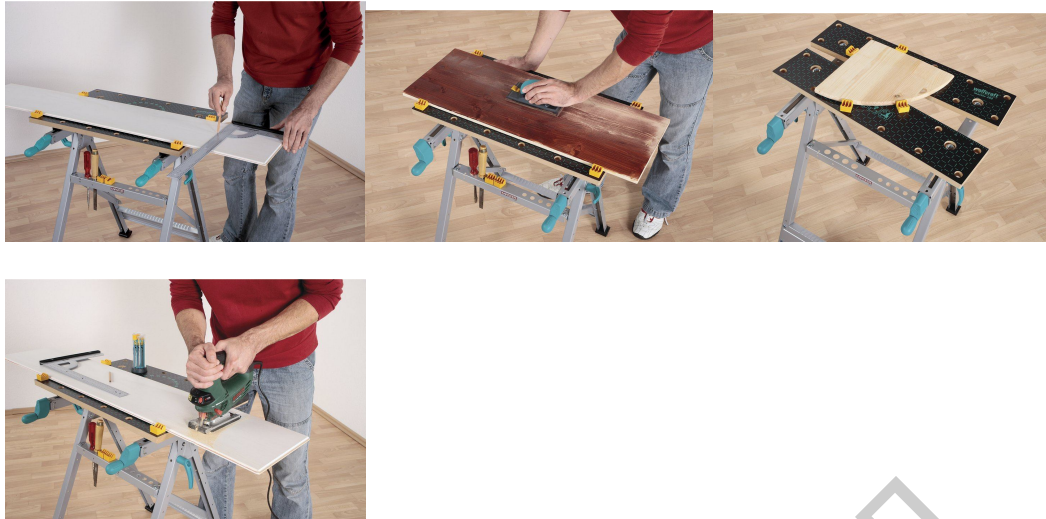


MASTER 200 - clamping and working table





Universal clamping and working table

Robust universally useful clamping and working table; no workshop or household should be without one.

- 2 MDF jaws, the front jaw is adjusted using 2 handles
- robust base frame which can be quickly folded away for space-saving storage
- integrated tool rack
- packaging: bo

article no.

description

EAN

6177000 1 MASTER 200 - clamping and working table 4006885617704

Ташев-Галвинг ООД
www.tashev-galving.com